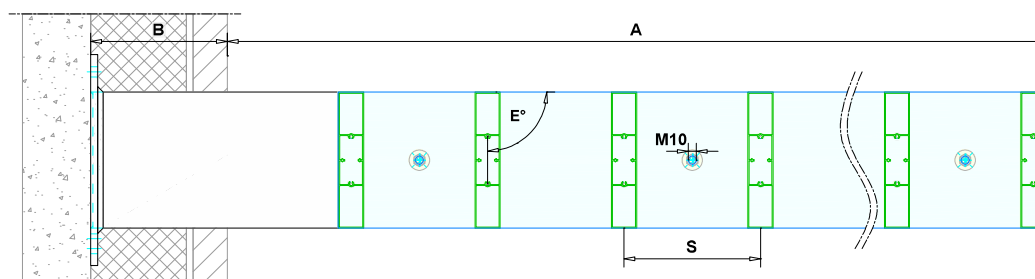
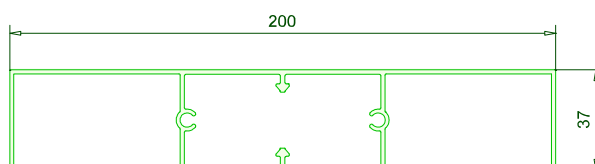


TECHNICAL DATA SHEET



TYPE	DucoSun Cubic 200x37 - Assembly plate * Project-related wall bracket
DESCRIPTION	External permanent solar shading system with fixed blades
SHAPE OF BLADE	Rectangular louvre blade
DIMENSIONS	200 mm x 37 mm
MATERIAL	Aluminium : EN AW-6063 T66 (EN 573-3) Profile thickness : min. 1,5 mm
ANGLE (E) AND STEP (S)	To be determined according to project
SPAN PROJECTION (A) SHIFT (B)	To calculate, example for 800Pa in table on page 2.
ASSEMBLY PLATE	Aluminium plates - thickness 5 mm (AlMgSi0,5)
WALL BRACKET	Welded steel plates - thickness 10 mm (S355)
FIXATION BLADE	Self-tapping countersunk bolt M6x30 DIN7500-MZ (AISI 304)
FIXATION ASSEMBLY PLATE	Hexagon bolt M10x50 DIN933 (AISI 304) / Washer M10 DIN9021 (AISI 304) / Lock nut M10 DIN985 (AISI 304) / EPDM Washer
FIXATION WALL BRACKET	Directly against the underlying structure (Ø15).
REACTION TO FIRE	A2-s1,d0 (EN13501-1)
SURFACE TREATMENT	Aluminium : - Standard aluminium anodised (15-20µm) according Qualanod - Polyester powder coated (60-80µm) according Qualicoat Seaside type A Steel : - Beamed (GH40) & metallized with zinc-aluminum alloy (40µm) - Polyester powder coated (60-80µm) according Qualicoat Seaside type A
OPTIONS	- Contour assembly plate : rectangular / blade shaped - Thermal break



3

2

1

D

D

C

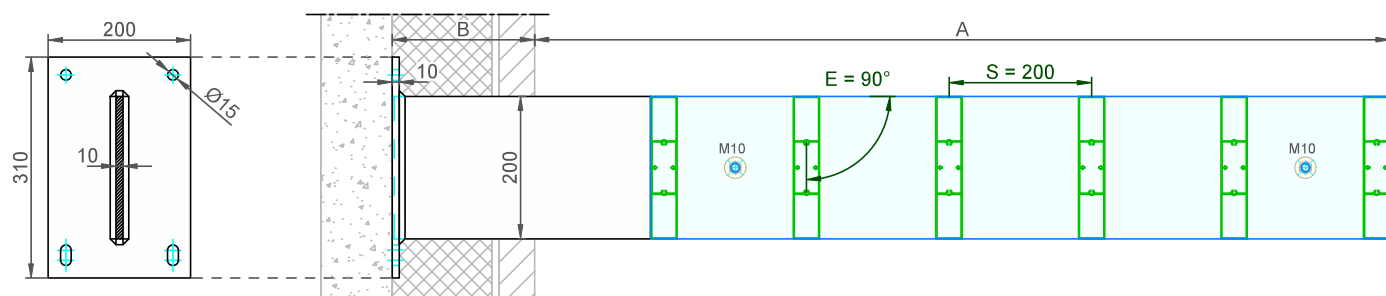
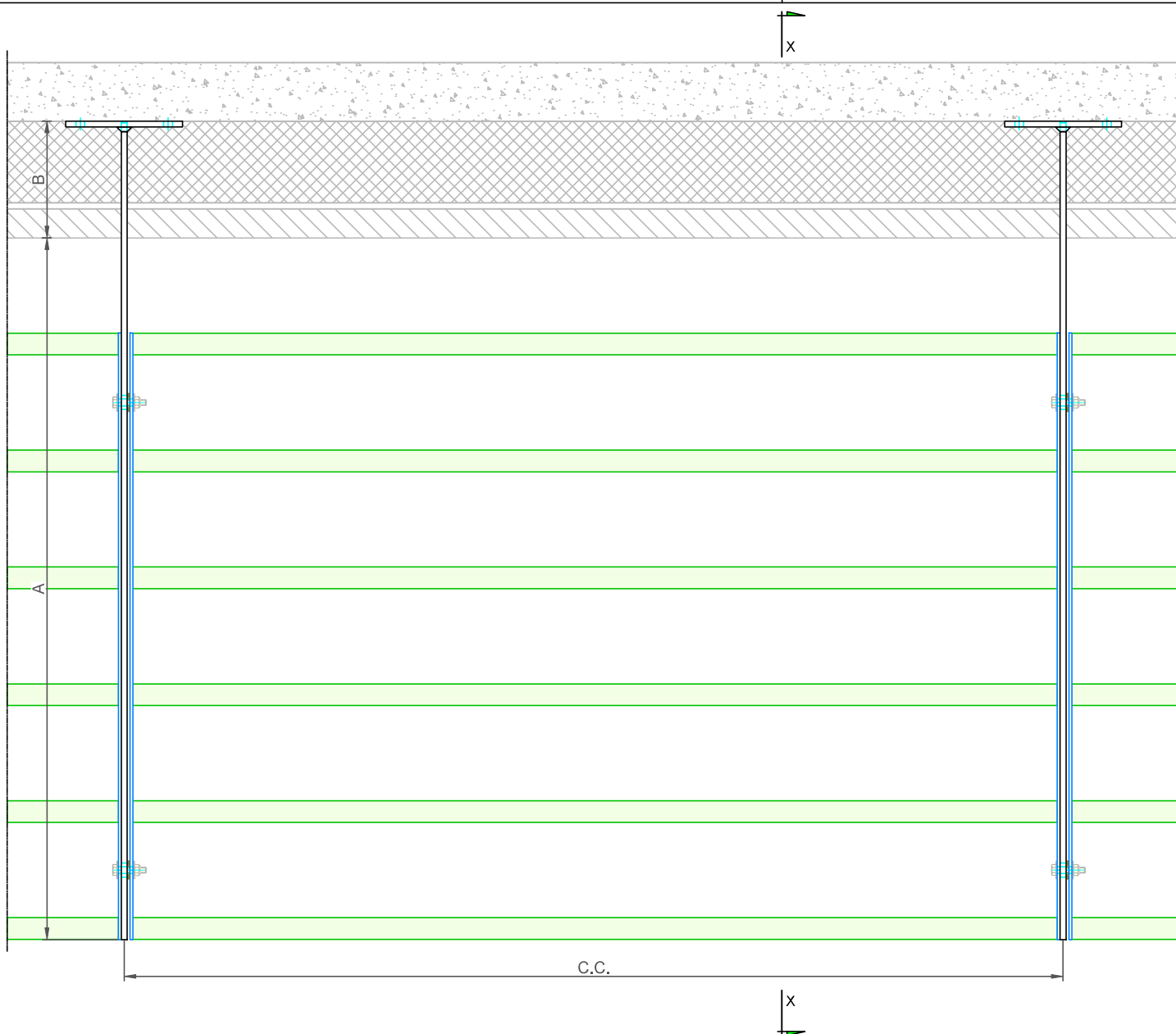
C

B

B

A

A



800Pa / S=200mm / E=90°			
# Blades	A	Max. C.C. (B=0mm)	Max. C.C. (B=300mm)
3	600	4000	4000
4	800	4000	4000
5	1000	4000	4000
6	1200	4000	4000
7	1400	4000	4000
8	1600	4000	3350
9	1800	3550	2700
Larger projections can be discussed.			

DucoSun **Cubic 200x37** Assembly plate : S=200 / E=90° / Project-related wall bracket

DUCO
Ventilation & Sun Control

Bedrijvenlaan 2 - 8630 VEURNE
tel. 0032-58/330066 - fax.0032-58/330067
email: info@duco.eu www.duco.eu
This drawing is the property of Duco Projects NV and cannot be copied or shown to a third party without prior written authorisation from Duco Projects NV.

Tol. : ISO 2768-mK

Mat. :

Format : A3

outline:

mm

weight:

kg/m

coat. surf:

dm²/m

Date : 08/11/2024

Scale: 1/7,5

Draftsman: JHX

Ref nr. :

Drawing nr. :

TF_Cubic 200x37_AP-PWB

3

2

1